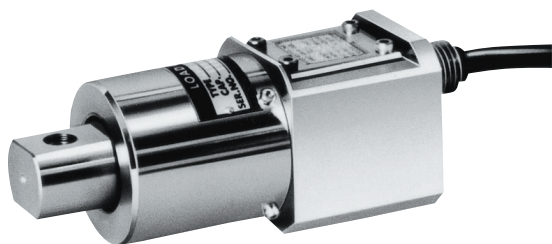
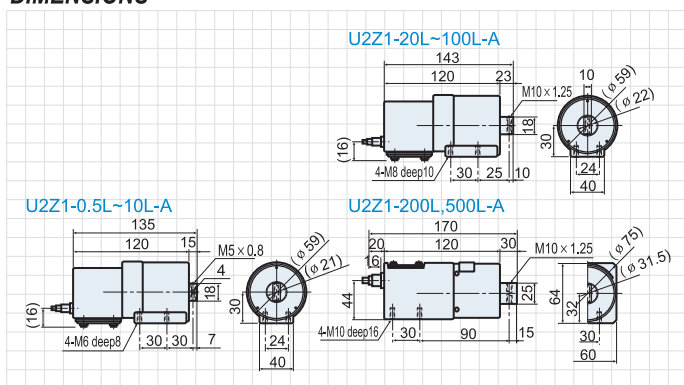


U2Z1/U2X1-A Series

U2Z1/U2X1-A Series



DIMENSIONS



밀폐구조형, Beam형 로드셀 / 플랫폼, 탱크타입

- 고정도·고안정, 소형경량으로 취급이 간단
- 완전밀폐용접구조로 충격과부하에 대해 강함.
- 인장, 압축겸용

SPECIFICATIONS

Model	U2Z1/U2X1-A Series
정격용량 (U2X1-A)	0.5, 1, 2, 5, 10, 20, 50, 100, 200, 500kgf
정격용량 (U2Z1-A)	1, 2, 5, 10, 20, 50, 100, 200, 500kgf
정격출력	2mV/V±0.15%(U2Z1-A) 2mV/V±0.4%(U2X1-A) 1.5mV/V±0.4%(0.5L)(U2X1-A)
허용과부하	500% of R.C.
한계과부하	150% of R.C.(200L/500L) 500% of R.C.
총합오차	250% of R.C.(200L/500L) 0.1% of R.O.(U2X1-A) 0.2% of R.O.(0.5L~10L)(U2X1-A) 0.04% of R.O.(U2Z1-A) 0.07% of R.O.(1L~10L)(U2Z1-A)
권장인가전압	DC 12V
최대인가전압	DC 20V
제로바란스	±1% of R.O.
입력단자간저항	350Ω ± 3.5Ω
출력단자간저항	350Ω ± 5Ω
절연저항	2000MΩ / DC50V
온도보상범위	-10°C ~ 60°C
영점온도영향	0.05% of R.O./10°C
출력온도영향	0.1% of Load/10°C
케이블지름 / 길이	Ø7 / 3m
방진, 방수	IP67

RWL Series

압연압력용 · 완전밀봉형

SPECIFICATIONS

Model	RWL Series
정격용량	10, 20, 50, 100, 200, 300, 500tf, 1000, 1500, 2000, 2500, 3000tf
정격출력	1mV/V
허용과부하	150% of R.C.
총합오차	1% of R.O.
권장인가전압	DC 12V
온도보상범위	-10°C ~ 75°C
영점온도영향	0.1% of R.O./°C
출력온도영향	0.1% of Load/10°C



ULF/UL Series

인장 · 압축시험용

SPECIFICATIONS

Model	ULF/UL Series
정격용량 (ULF)	500kgf, 1, 2, 3, 5, 10, 20, 30, 50tf
정격용량 (UL)	500kgf, 1, 2, 5, 10, 20, 30, 50, 100, 200tf
정격출력	1mV/V±0.5% 1.5mV/V±0.5%(UL)
허용과부하	150% of R.C.
총합오차	0.3% of R.O. 0.2% of R.O.(UL)
권장인가전압	DC 12V
온도보상범위	-10°C ~ 70°C -10°C~75°C(UL)
영점온도영향	0.1% of R.O./10°C 0.07% of R.O./10°C
출력온도영향	0.1% of Load/10°C 0.05% of Load/10°C

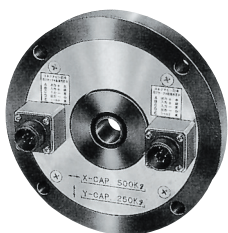


X-Y Series

2축동시 계측형

SPECIFICATIONS

Model	X-Y Series
정격용량	XY-500L/250L : X-500kgf, Y-250kgf XY-750L/250L : X-750kgf, Y-250kgf XY-1000L/500L ; X-1tf, Y-500kgf
정격출력	2mV/V±0.2%
허용과부하	150% of R.C.
총합오차	0.1% of R.O.
권장인가전압	DC 12V
온도보상범위	-10°C ~ 70°C
영점온도영향	0.05% of R.O./10°C
출력온도영향	0.05% of Load/10°C



SPN Series

로드리미트용

SPECIFICATIONS

Model	SPN Series
정격용량	1tf, 2tf, 3tf, 10tf, 20tf
정격출력	1.5mV/V
허용과부하	150% of R.C.
총합오차	3% of R.O.
권장인가전압	DC 12V
온도보상범위	-10°C ~ 70°C
영점온도영향	0.3% of R.O./10°C
출력온도영향	0.5% of Load/10°C

