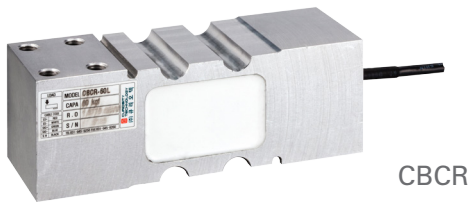


CBCR / CBCW

Single Point Load Cell

30, 60, 150 kgf



CBCR



CBCW

FEATURES

- Low cost
- Off center compensated
- Protection class IP67
- Water proof type

Material

- Anodized Aluminum

Cable

- Braided shield 4-wire round cable with PVC - jacket

Mounting

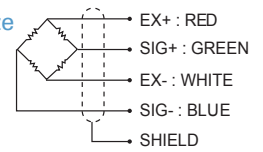
- Socket-head cap screw
- M8 x 1.25 (10.9)
- Tightening torque : 29Nm

Maximum Platform Size

- 400 x 600 mm

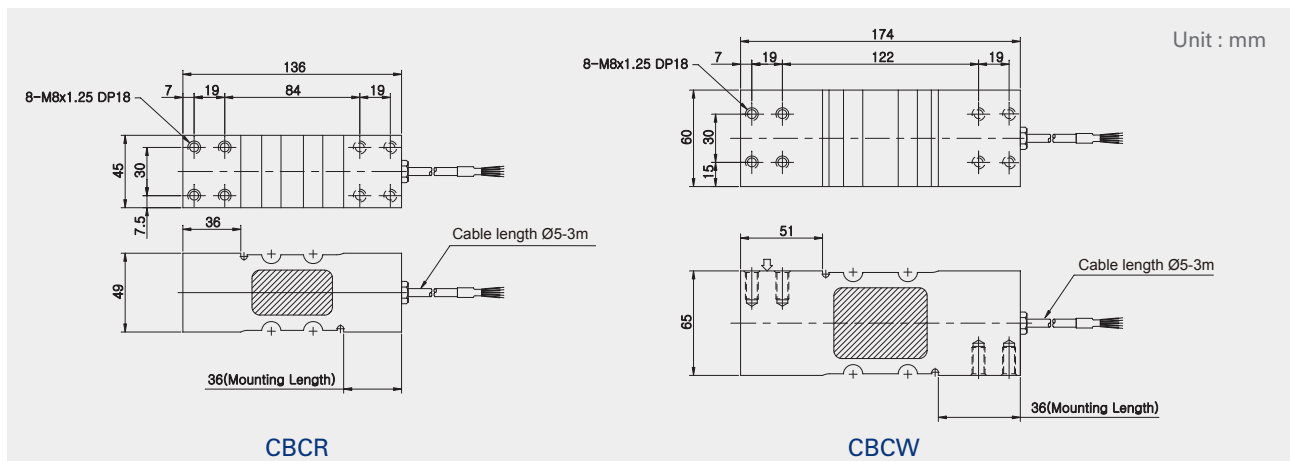
Ordering Information

- CBCR / W -xxx "L"



Capacity in kgf

DIMENSIONS



CBCR

CBCW

Unit : mm

SPECIFICATIONS

| Max. Capacity | kgf | 30, 60, 150 kgf | |
|-------------------------|--------------|-----------------|-----------------|
| Rated output | mV/V | 2.0 ± 0.2 | |
| Zero balance | mV/V | 0 ± 0.1 | |
| Combined error | %RO | 0.02 | |
| Repeatability | %RO | 0.02 | |
| Creep (30min.) | %RO | 0.02 | |
| Temperature effect on | Zero value | %RO/10°C | 0.03 |
| | Output value | %RO/10°C | 0.03 |
| Excitation | Recommended | V | 10 |
| | Maximum | V | 15 |
| Resistance | Input | Ω | 400 ± 20 |
| | Output | Ω | 350 ± 3.5 |
| | Insulation | MΩ | >2,000 @ 50V DC |
| Compensated temp. range | °C | -10 ~ +40 | |
| Operating temp. range | °C | -20 ~ +80 | |