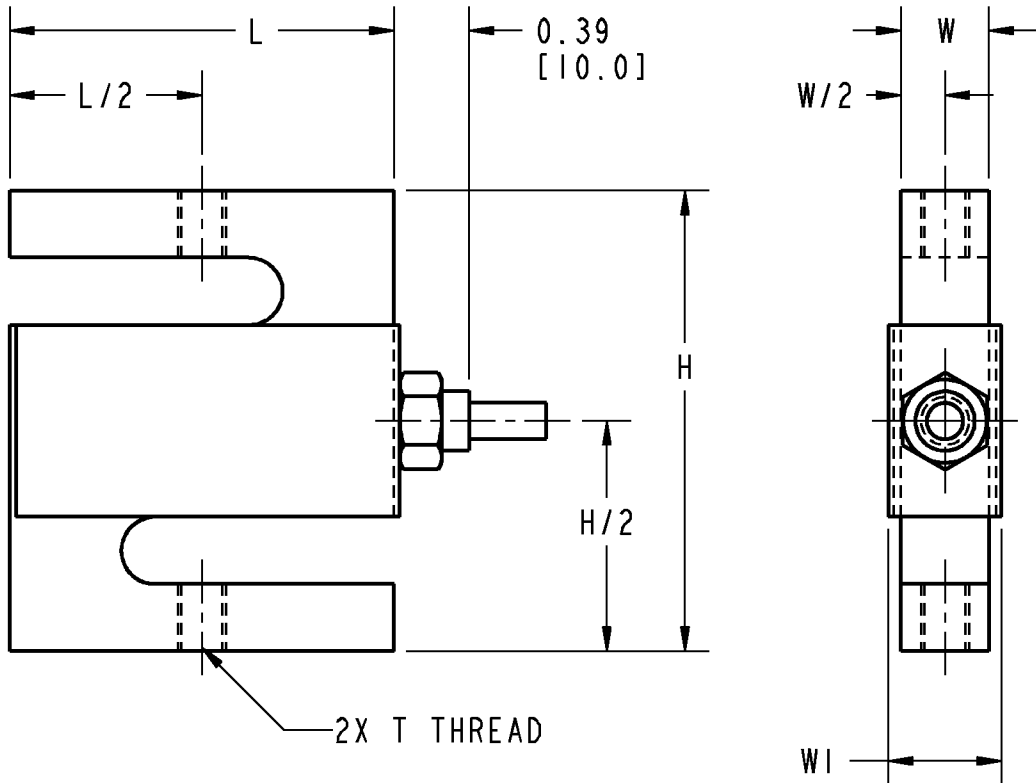


CAPACITY	DIMENSIONS / DATA								
	H	H/2	L	L/2	T (2X)	W	W/2	WI	DEFLECTION @ RC
50-300LB	2.50 [63.5]	1.25 [31.8]	2.00 [50.8]	1.00 [25.4]	1/4-28UNF X0.4 LG	0.50 [12.7]	0.25 [6.4]	0.63 [16.1]	50LB 0.007 [0.18] 100LB 0.008 [0.20] 200/300LB 0.008 [0.21]
500-1500LB	2.50 [63.5]	1.25 [31.8]	2.00 [50.8]	1.00 [25.4]	1/2-20UNF X0.4 LG	0.75 [19.1]	0.38 [9.5]	0.88 [22.4]	500LB 0.009 [0.23] 750LB/1KLB 0.010 [0.26] 1.5KLB 0.012 [0.31]
2000LB	2.50 [63.5]	1.25 [31.8]	2.00 [50.8]	1.00 [25.4]	1/2-20UNF X0.4 LG	1.00 [25.4]	0.50 [12.7]	1.13 [28.8]	0.014 [0.35]
3000LB	4.00 [101.6]	2.00 [50.8]	3.00 [76.2]	1.50 [38.1]	1/2-20UNF X0.6 LG	1.00 [25.4]	0.50 [12.7]	1.13 [28.8]	0.026 [0.65]
5000-10000LB	4.00 [101.6]	2.00 [50.8]	3.00 [76.2]	1.50 [38.1]	3/4-16UNF X0.6 LG	1.00 [25.4]	0.50 [12.7]	1.13 [28.8]	5KLB 0.028 [0.71] 10KLB 0.030 [0.77]
15000LB	5.50 [139.7]	2.75 [69.9]	4.00 [101.6]	2.00 [50.8]	1"-14UNS X1.22 LG	1.25 [31.8]	0.63 [15.9]	1.38 [35.1]	0.034 [0.85]
20000LB	7.00 [177.8]	3.50 [88.9]	5.00 [127.0]	2.50 [63.5]	1-1/4-12UNF X1.57 LG	2.00 [50.8]	1.00 [25.4]	2.13 [54.6]	0.022 [0.55]

CAPACITY	DIMENSIONS / DATA									
	H	H/2	L	L/2	T (2X)	W	W/2	WI	DEFLECTION @ RC	
50-100KG	2.50 [63.5]	1.25 [31.8]	2.00 [50.8]	1.00 [25.4]	M8X1.25 X10.16 LG	0.50 [12.7]	0.25 [6.4]	0.63 [16.1]	50KG 0.008 [0.19] 100KG 0.008 [0.19]	
250-500KG	2.50 [63.5]	1.25 [31.8]	2.00 [50.8]	1.00 [25.4]	M12X1.75 X10.16 LG	0.75 [19.1]	0.38 [9.5]	0.88 [22.4]	250KG 0.010 [0.25] 500KG 0.011 [0.27]	
1000KG	2.50 [63.5]	1.25 [31.8]	2.00 [50.8]	1.00 [25.4]	M12X1.75 X10.16 LG	1.00 [25.4]	0.50 [12.7]	1.13 [28.8]	0.015 [0.38]	
2500KG	4.00 [101.6]	2.00 [50.8]	3.00 [76.2]	1.50 [38.1]	M20X1.5 X15.2 LG	1.00 [25.4]	0.50 [12.7]	1.13 [28.8]	0.031 [0.79]	
5000KG	4.00 [101.6]	2.00 [50.8]	3.00 [76.2]	1.50 [38.1]	M20X1.5 X20.0 LG	1.00 [25.4]	0.50 [12.7]	1.13 [28.8]	0.034 [0.86]	
7500KG	5.50 [139.7]	2.75 [69.9]	4.00 [101.6]	2.00 [50.8]	M24X2 X30.0 LG	1.25 [31.8]	0.63 [15.9]	1.38 [35.1]	0.037 [0.94]	



- NOTES:
1. MATERIAL: 4340 ALLOY STEEL, NICKEL PLATED.

2. DIMENSIONS ARE IN INCHES [mm].

3. FOR DEFLECTION AT RATED CAPACITY: SEE TABLE

4. CABLE LENGTH: 19.7' (6m)
- CABLE TERMINATION:
- SIG

+SIG

-EXE

+EXE

SHLD
- WHT

GRN

BLK

RED

BARE

REV	CHANGE	BY	DATE	SCALE 1.000	METTLER TOLEDO	
A	REVISE LOAD CELL MODEL NUMBER	MEC	10/03/06	DATE 12/20/05		
B	REVISE DEFLECTION VALUES	MEC	9/16/08	DRN MEC APPD MEC	GENERAL DIMENSION LAYOUT, MODEL SLS410 S-CELL	
C	REVISE THREAD DEPTH DIM	MEC	04/01/09			
					UNLESS OTHERWISE SPECIFIED, ALL DIMENSIONS ARE IN INCHES [MM], AND DIMENSIONAL TOLERANCES ARE: METRIC DECIMAL ANGULAR .X ±.5 .X ±.1 X ± 1° .XX ±.20 .XX ±.02 .X ±.5° .XXX ±.005	
					THIS PRINT IS FURNISHED WITH THE UNDERSTANDING THAT THE ESSENCE THEREOF WILL NOT BE REPRODUCED IN WHOLE OR IN PART WITHOUT WRITTEN AUTHORIZATION OF METTLER-TOLEDO, INC. ALL DESIGNS ARE THE PROPERTY OF METTLER-TOLEDO, INC. AND WILL BE PROTECTED BY PATENTS.	
					TA601264	REV C