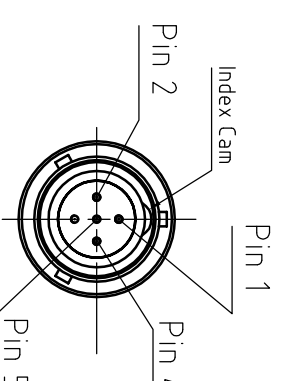


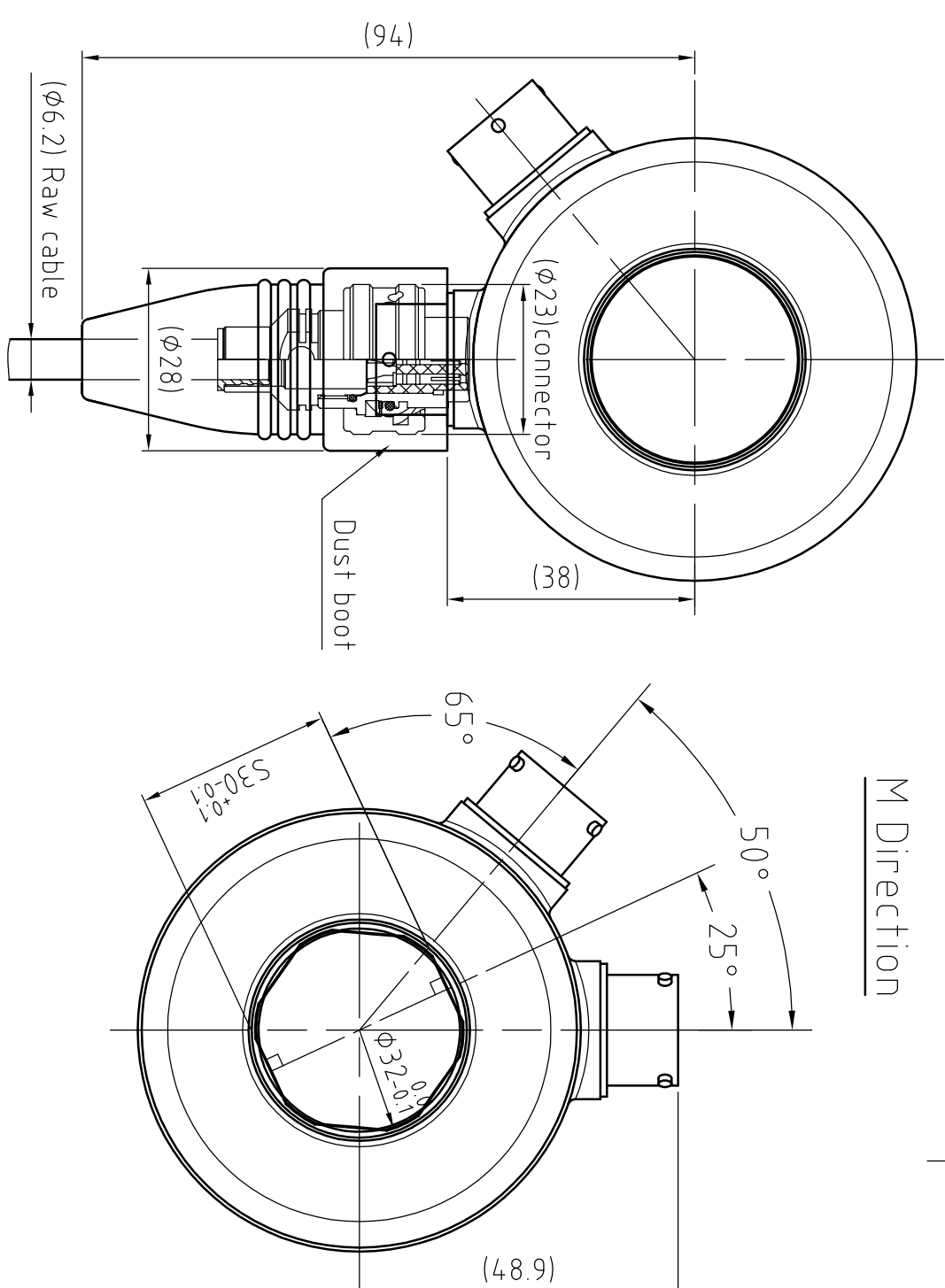
Capacity	R (6)	Max horiz. travel (7)	Deflection (3)
5t	100	8	0.14
7.5t	140	8	0.20
10t		7.5	0.26
15t		7	0.37
22.5t	180	5	0.49

Specifications

1. Dimensions are in mm.
- (2) Ideal load/support points.
- (3) Nominal deflection at Rated Capacity (E_{max}).
4. Standard cable length = 12m.
- Optional cable length = 20m
5. Nominal cable diameter = $\phi 5.2\text{mm}$
- (6) Spherical radius of end buttons.
- (7) Max. allowable horizontal displacement of top button relative to bottom button.
8. Wire according to the following table:

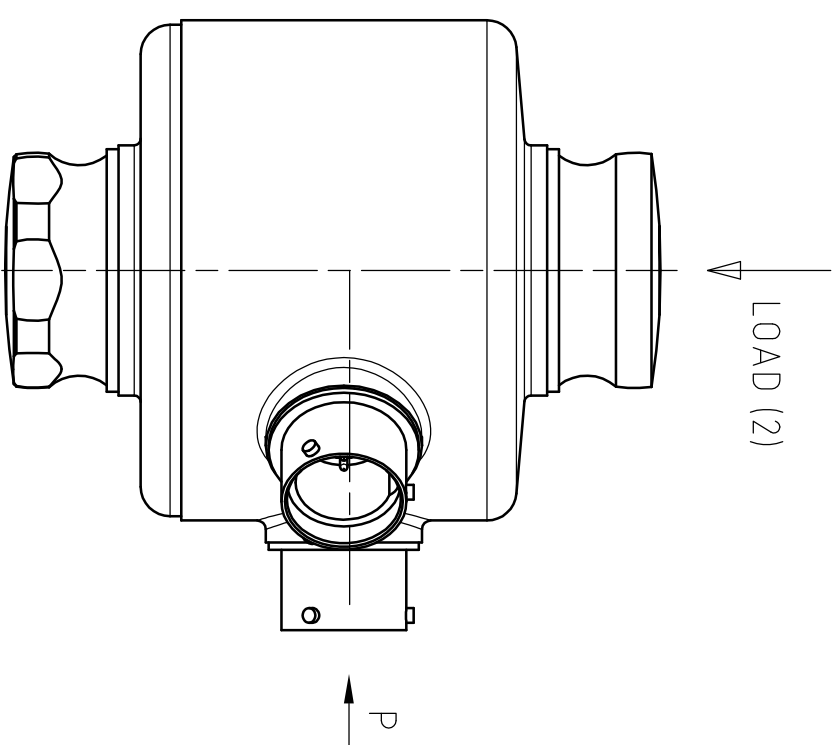
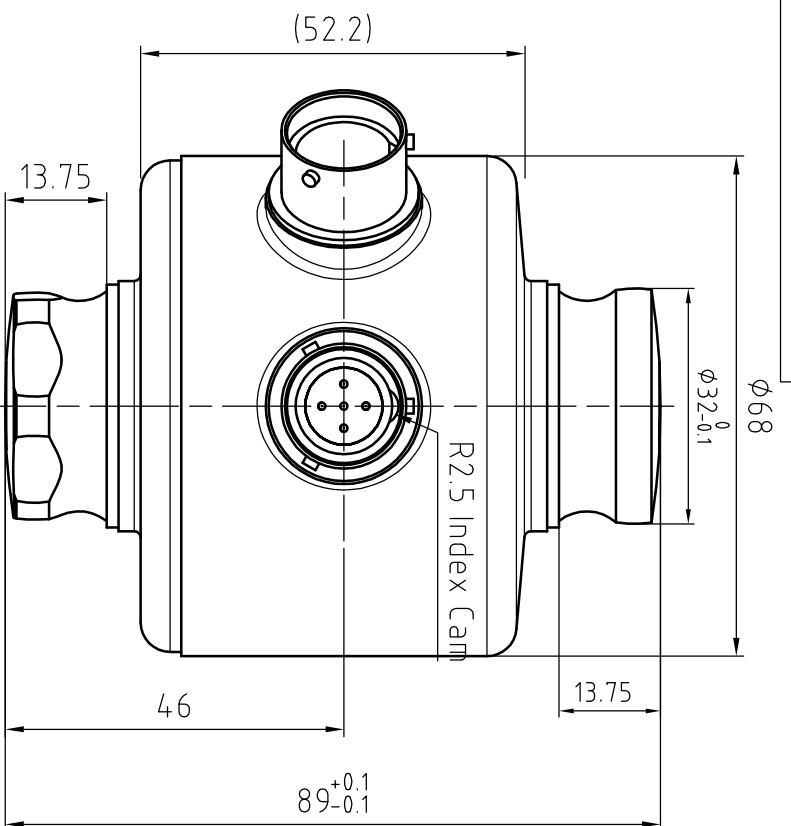


Pin	Function	Wire
1	Communication CANL	Blue
2	Communication CANH	White
3		
4	Supply Voltage (28V max)	Red
5	GND	Black



GDL Drawing				METTLER TOLEDO MTCN / MTCZ	
GDL SLC611D LOAD CELL					
版本/VER	更改号/ER	ECNN0	更改/ABY	日期/DATE	
B	500000024860		史国裕	20150723	
C	500000034468		史国裕	20160812	
设计/DRN	史国裕	批准/APPD			
审核/CHECK	朱向群	认证/AGEN			
工艺/MFG	周正宇	日期/DATE	20150427		
SHEET: 第 1 页 of 共 1 页			30220609C		

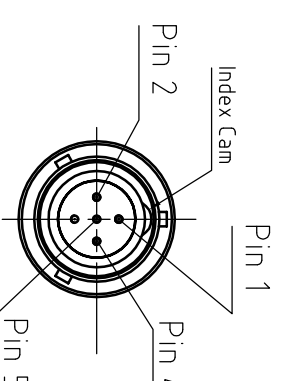
认证标志/Appro Mark	
<input type="radio"/>	Metrology
<input type="radio"/>	Safety
<input type="radio"/>	Ex



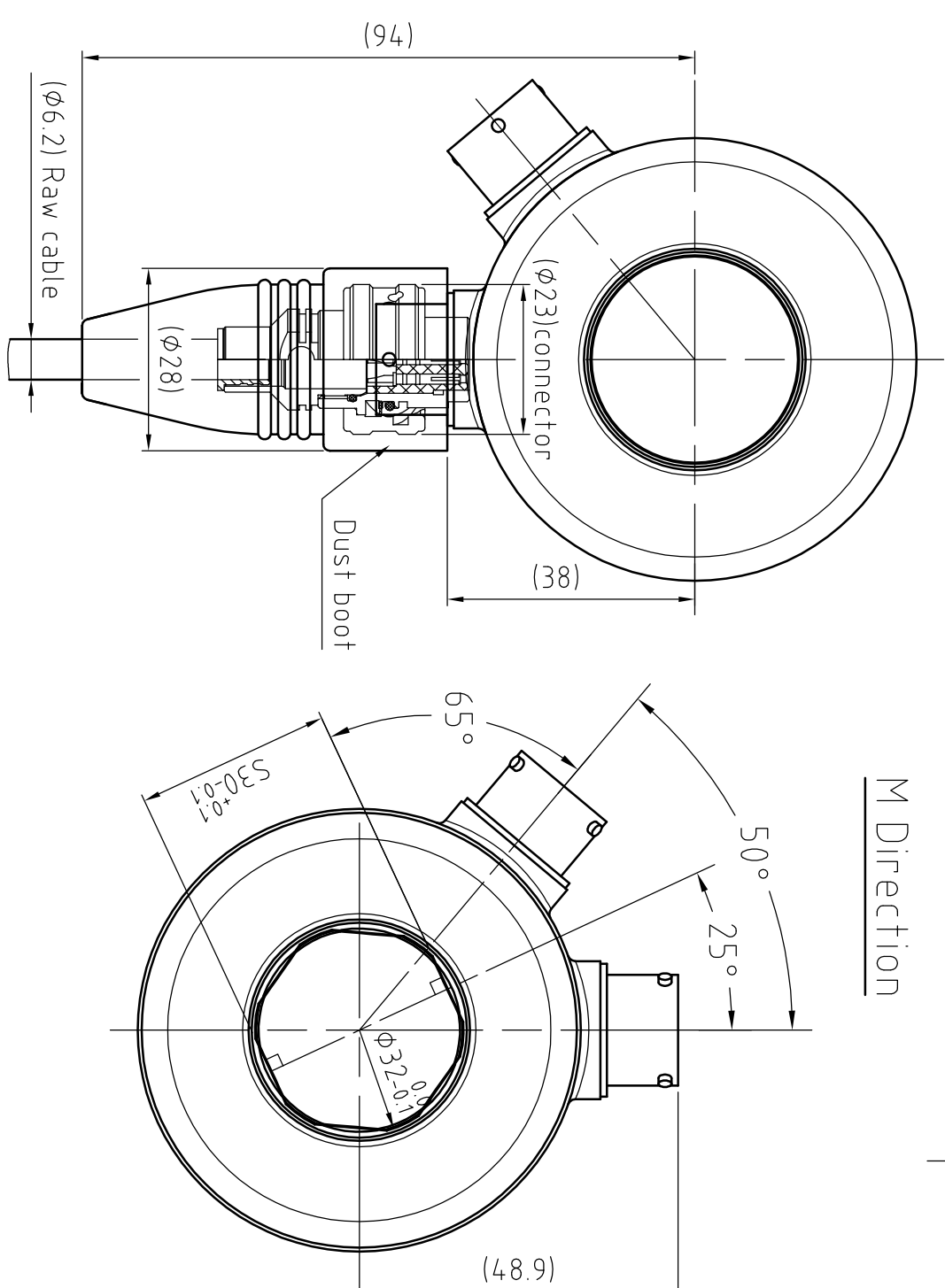
Capacity	R (6)	Max horiz. travel (7)	Deflection (3)
5†	100	8	0.14
7.5†	14.0	8	0.20
10†		7.5	0.26
15†		7	0.37
22.5†	180	5	0.49

Specifications

1. Dimensions are in mm.
- (2) Ideal load/support points.
- (3) Nominal deflection at Rated Capacity (E_{max}).
4. Standard cable length = 12m.
- Optional cable length = 20m
5. Nominal cable diameter = $\phi 5.2\text{mm}$
- (6) Spherical radius of end buttons.
- (7) Max. allowable horizontal displacement of top button relative to bottom button.
8. Wire according to the following table:



Pin	Function	Wire
1	Communication CANL	Blue
2	Communication CANH	White
3		
4	Supply Voltage (28V max)	Red
5	GND	Black



GDL Drawing										METTLER TOLEDO MTCN / MTCZ		
GDL SLC611D LOAD CELL												
版本/VER	更改号/ER	ECNN0	更改/ABY	日期/DATE	图样阶段/STAGE	SP	重量/WGT	比例/SCALE				
设计/DRN	史国裕	批准/APPD			S	A	N	1:1				
审核/CHECK	朱向群	认证/AGEN										
工艺/MFG	周正宇	日期/DATE	20150427	SHEET: 第 1 页 of 共 1 页					30220609C			

认证标志/Appro Mark	
<input type="radio"/>	Metrology
<input type="radio"/>	Safety
<input type="radio"/>	Ex